

***JF-STOLL***

# Product Range



*Mowers*



*Tedders*



*Rakes*



*Forage  
Harvesters*



*Complete  
Diet Mixers*

# **JF-STOLL**

## **Specialist in grassland machinery and complete diet mixers**

At JF-STOLL we have chosen to follow the grass from field to stable and to make this our core area. We have gained a vast amount of competence and knowledge within the area, which today makes us one of Europe's leading specialists within grassland machinery and complete diet mixers.

### **Wide range – world-wide**

For many years we have supplied farmers all over the world with our machines. Farmers who work under unique regional requirements and who therefore make large demands to our machines. In dialogue with farmers all over the world we have therefore developed the machines that can be found in our product range today. The range is very wide and thus covers the needs of all size farms and contractors.

### **Long experience behind JF-STOLL**

JF-STOLL is the result of a long-term and, during the past 7 years, even closer co-operation between JF-Fabriken in Denmark and STOLL in Germany. JF-STOLL is an expert within mowers, forage harvesters, trailers, rakes and tedders. The successful co-operation makes it natural to market a whole product line, which follows the grass from field to stable, under the name JF-STOLL.



## JF-STOLL - quality all the way through



### **Closely supervised from raw material to delivery**

JF-STOLL's quality control is unique. Everything is tested – the raw materials, the purchased parts and, of course, the finished machine – down to the last detail. No product leaves JF-STOLL until it has been completely tested – in the factory and in the field. Therefore, JF-STOLL is the safest choice you can make.

### **Unique pre-treatment of the steel and balancing of the rotating parts**

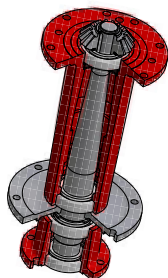
Two examples of JF-STOLL's uncompromising quality work: All steel for production is treated with a special shot-peening process, which ensures a perfect paint finish with an incredible durability. All rotating parts are tested and balanced on JF-STOLL's advanced precision installation. And finally, every single machine is tested at its normal operating speed.



### **The JF-STOLL paint – a special advantage**

The JF-STOLL paint does not peel off, does not crack and retains its brightness. It resists scratches and is unaffected by temperature, water, oil and acids. JF-STOLL uses the latest, most advanced production technology and own a computer controlled powder paint installation. Using the powder paint method, JF-STOLL obtains not only a hard, highly resistant surface finish but also a 100 per cent environmental friendly solution.

## Sturdy and easy to repair



*The drum shafts have no less than 4 strong bearings. They help increasing the machine's life noticeably.*

### Top Service

No longer do you have to drain the grease filled gear through. The top of the drum can be removed. This facilitates the replacement of spare parts and reduces the number of hours in the workshop.



### Movable blade holders

Drum skirts are equipped with an extra set of holes for the blades. This also doubles the normal life.

### Robust gearbox

All gears have double keyways and are therefore firmly fixed to the shafts. No unnecessary operational stoppages.



### Sectioned drum construction

The drums are divided into several sections. This means easy and cost-efficient replacement of parts.



# Drum mowers



## CM

- Robust construction with simple maintenance.
- Design of guards prevents plant residues accumulating on top of the machine.
- The weight of the machine is very low – it is possible to use small tractors with cat. I or II.
- Handy transport. The machine is converted to transport position from the comfort of the tractor seat.
- Effective stone protection.
- Top Service - see page 4.
- CM 305 is equipped with Easy Lift (see page 10). Easy Lift means:
  - Very easy connection to the tractor.
  - Excellent contour following and constant low ground pressure on uneven ground.
  - Constant angles on PTO drive shafts when turning on headlands ensure long life.

Type	CM 170	CM 190
Working width	1.65 m	1.90 m
Tractor, min. PTO	22 kW/30 HP	30 kW/40 HP
Weight	365 kg	480 kg
Number of drums	2	2
Number of blades	6	6
Break-away mechanism	Standard	Standard
Easy Lift	No	No

Type	CM 225	CM 305
Working width	2.25 m	3.05 m
Tractor, min. PTO	35 kW/47 HP	50 kW/68 HP
Weight	630 kg	870 kg
Number of drums	2	4
Number of blades	8	12
Break-away mechanism	Standard	Standard
Easy Lift	No	Yes

# Front mounted drum mowers



## CM-F

- Extra strong blades leaving an excellent stubble.
- Ergonomically correct tools for quick replacement of blades.
- Very sturdy machine. For instance fourfold bearing support of the rotor shafts and double keyways on all gears.
- Top Service – see page 4.
- Economical replacement of skids and rotor skirt.
- Excellent contour following with the JF-STOLL contour device.
- Exceptional safety when driving into big stones and other objects.

Type	CM 265 F	CM 305 F
Working width	2.65 m	3.05 m
Tractor, min. PTO	40 kW/54 HKP	50 kW/68 HP
Weight	630 kg	705 kg
Number of drums	4	4
Stubble height adjustment	4 steps	4 steps
Number of blades	12	12
Rotating swath discs	Yes	Yes
Swath width	0.9-1.4 m	1.1-1.6 m

# Disc mowers



## SB

- Strong HD-discs.
- Strong and extra long profile blades with long life.
- Hard-wearing with skids under all discs.
- Cutter bar with Top Service modules minimises possible repair costs. See page 8.
- Top hat on the inner as well as the outer discs to ensure crop flow.
- The cutter bar is secured against stone damage with a 4 mm thick bottom shield, stone protection, side protection and skids under all discs.
- SB 2402/2802 has exceptionally high specifications, e.g. Easy Lift. When turning on the headland, the angle of the PTO shaft remains unchanged – therefore no vibrations and extra long life.

Type	SB 2000	SB 2400/ SB 2402	SB 2802
Working width	2.0 m	2.4 m	2.8 m
Tractor, min. PTO	30 kW/40 HP	35 kW/50 HP	40 kW/54 HP
Weight	420 kg	460 kg	520 kg
Number of discs	5	6	7
Number of blades	10	12	14

# Top Service means easy maintenance



Lift up the canvas when you want to check the parts of the machine. The Quick'n Safe blades have a very long life and are easy to replace. All cutter bars are equipped with a reinforcement ring (a) and an anti-wrapping ring (b), minimising potential damage to the hubs, bearings and gears. Furthermore, all cutter bars are equipped with Top Service. This means that the inspection or replacement of the individual disc gears or bearings is simple and can be carried out "in field" if required.





# Disc mowers



## GX

Same advantages as SB page 7 and:

- Pendulum suspension of the cutter bar gives good contour following and low ground pressure. This reduces the lateral forces on the tractor and results in low power requirements.
- The machine is secured against stone damage by means of a break-away mechanism. When the device has been activated, the machine can be moved back into working position hydraulically without reversing the tractor.
- Rotating swath discs ensure an even swath.
- Easy Lift (see page 10) ensures:
  - Very easy connection to the tractor.
  - Extremely good ground following and constant low ground pressure on uneven ground.
  - Constant angles on PTO drive shafts when turning on headlands ensure long life.
- The GX-05 range features the new Slim Line cutter bar. It is extremely low and smooth (see the small photo).

Type	GX 2805	GX 3205
Working width	2.8 m	3.2 m
Tractor, min. PTO	40 kW/54 HP	50 kW/68 HP
Weight	760 kg	800 kg
Number of discs	7	8
Number of blades	14	16

# Easy Lift



## Easy Lift gives many advantages

With Easy Lift you obtain the following advantages:

### Easy operation

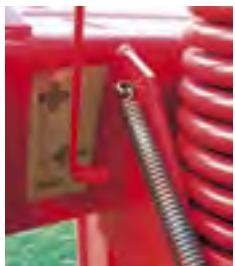
When the machine is connected it is not necessary for the link arms of the tractor to be level. Easy Lift has automatic height adjustment.

### Perfect contour following

The springs determining the ground pressure are factory set on the production line. The ground pressure is changed by adjusting the height of the link arms. An indicator shows if the ground pressure of the machine is optimal for driving e.g. 15 km/h on even ground or 6 km/h on hilly ground.

### Long life

The angles of the PTO shafts are constant when turning on headland. There are no vibrations and longer life is obtained.



*The ground pressure is adjusted by raising or lowering the link arms.*

# PE conditioner



## Strong and flexible conditioners

The JF-STOLL conditioners are the result of a great deal of research, where both the function and the durability have been tested thoroughly in the field. Therefore, the JF-STOLL conditioners are known for their efficiency and strength.

### Effective PE-finger conditioner

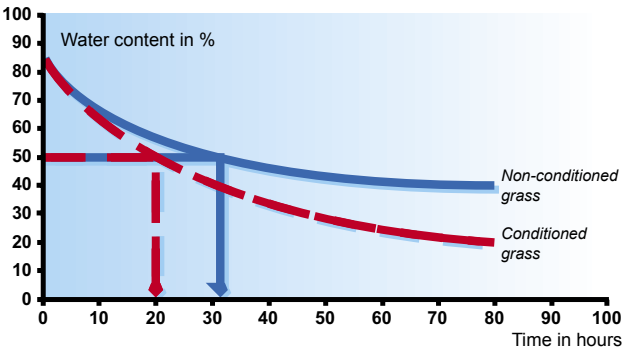
The many strong PE fingers make the JF-STOLL conditioner extremely effective. The result is quicker drying and a better quality feed. Conditioning treatment is quickly adjusted by means of a "tool free" lever.

### Increased drying speed

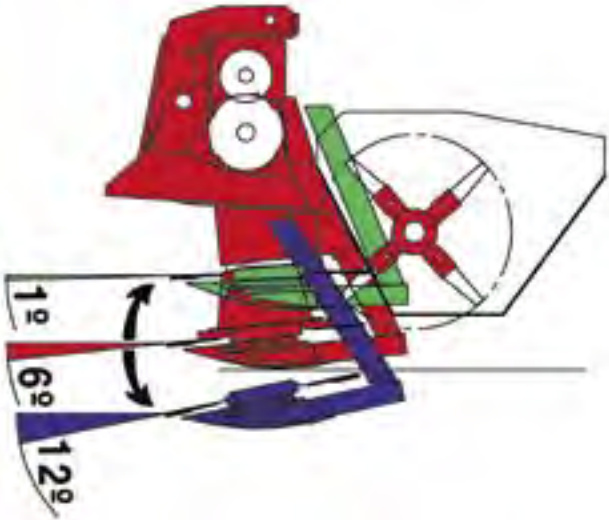
Tests at the Swedish Institute of Agricultural Engineering show that the drying time is reduced by approx. 40 per cent when using JF-STOLL conditioners. The diagram shows the drying speed for conditioned and non-conditioned grass.



*Grass before and after efficient conditioning.*



# Top Contour for the professional user



The front mounted GD is equipped with Top Contour, which adjusts the cutting angle to the ground.

When the ground inclines downwards the knife angle of the trapezoidal geometry is increased. Top Contour is equipped with very strong springs reducing the ground pressure to a very low level over a very large working area (approx. 32 cm). Besides, the suspension is made so that a very large ground clearance during field turns and transport (approx. 50 cm) is obtained. The front mower is equipped with JF-STOLL's well-known cutting system containing extra long profile blades and flow-intensifiers, which together leave a very even stubble. Furthermore, the latest generation of cutter bars with Top Service is used,

reducing any repair only to last a few minutes. Also the PE-finger conditioner which features long life of the fingers (theoretically 15 years) and good efficiency is standard on the GD-FM model.

# Front mounted disc mowers



## GD-FM

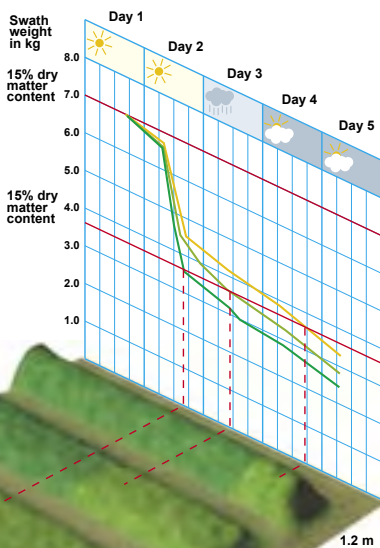
- The cutting angle is automatically adjusted to the ground with Top Contour – see page 12.
- Low ground pressure spares the machine and the grass roots.
- Long profile blades and flow-intensifiers leave an even stubble.
- The PE-finger conditioner reduces the drying time and makes well-shaped swaths.
- The 05 range features the new Slim Line cutter bar - see the small photo.

Type	GD 3200 FM	GD 3205 F	GD 3205 FM Top Dry
Both right and left rotating PTO	Yes	Yes	Yes
Tractor, min. PTO	70 kW/95 HP	70 kW/95 HP	70 kW/95 HP
Oil outlets	1 single-acting	1 single-acting	1 single-acting
RPM on PTO	1000	1000	1000
Friction clutch	Standard	Standard	Standard
Working width	3.15 m	3.15 m	3.15 m
Transport width	2.98 m	2.98 m	2.98 m
Number of HD discs	8	8	8
Number of profile blades	16	16	16
Flow-intensifiers	Standard	-	-
Conditioner width	1.0 m	-	2.70 m
Swath width	1.2-1.5 m	1.2-1.5 m	1.4-2.8 m
Weight	1000 kg	1000 kg	1000 kg
Top Dry equipment	-	-	Standard
Conditioner	Yes	No	Yes
Suitable for double-swathing	Yes	No	No

# Wide spread swaths give efficient drying

JF-STOLL has examined the relation between swath width and drying speed and proved that a wide but thin swath provides the most efficient drying. In the beginning the test material has a dry matter content of 15% and weighs 7 kg per metre.

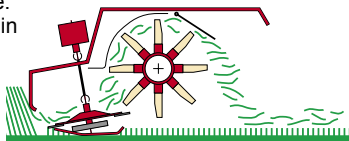
A dry matter content of 30%, which is normally used for making silage, is already achieved after 1 day in the wide but thin swath. The same degree of dryness is only achieved after 3 days in the very narrow and thick swath.



## Extra conditioning with Top Dry

GMS can be equipped with Top Dry. This equipment is activated by means of a handle which adjusts a plate above the PE-finger conditioner. In the lowest position the grass gets extra conditioning and for a longer time.

The grass is then placed in the full width of the conditioner rotor.



## GX - Top Dry

GX-SM is equipped with Top Dry as standard. A spreading width of 80% of the working width is achieved.

# Disc mowers with conditioner



## GX-SM Top Dry

- Pendulum suspension of the cutter bar gives good contour following and low ground pressure. This reduces the lateral forces on the tractor and results in low power requirements.
- The GX-05 range features the Slim Line cutter bar. It is extremely low and smooth (see the small photo).
- Major adjustment of the stubble height is made via the skids and fine adjustment is made via the top link.
- With the Top Dry system a spreading width of 90% of the working width is obtained. The machine can also lay very narrow swaths if required.
- The GX range is equipped with Easy Lift (see page 10) which ensures:
  - Very easy connection to the tractor.
  - Extremely good ground following and constant low ground pressure on uneven ground.
  - Constant angles on PTO drive shafts when turning on headlands ensure long life.

Type	GX 2405 SM	GX 2805 SM	GX 3205 SM
Working width	2.40 m	2.80 m	3.20 m
Tractor, min. PTO	44 kW/60 HP	54 kW/73 HP	66 kW/90 HP
Weight	850 kg	950 kg	1160 kg
Number of discs	6	7	8
Number of blades	12	14	16
Swath width	1.0-2.0 m	1.2-2.4 m	1.2-2.8 m
Easy Lift	Standard	Standard	Standard

# Trailed disc mowers with conditioner



## GMS 100 Range

- Hydraulic conversion to transport position.
- The cutter bar is equipped with HDS discs and profile blades. Both with long life.
- The 100 range can be equipped with Top Dry (see page 20).
- Is available with PE-finger conditioner for normal grass types – see page 11.
- The 100 range is not equipped with Top Safe. For Top Safe see the 1000 range on page 18.

Type	GMS 280	GMS 320
Working width	2.8 m	3.15 m
Tractor, min. PTO	50 kW/68 HP	60 kW/82 HP
Weight	1540 kg	1725 kg
Number of discs	7	8
Number of blades	14	16
Conditioner type	PE-fingers	PE-fingers



## Top Safe



# Top Safe – The Anti Crash System

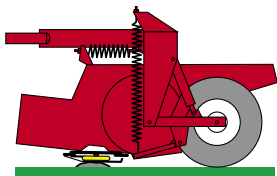
### The right choice

JF-STOLL's unique Top Safe Anti Crash system protects your machine efficiently when encountering stones and other obstacles and at the same time ensures low service costs and long life.

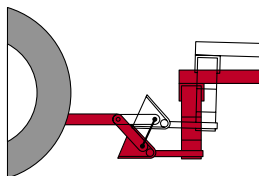
### Double working speed – with safety

The Top Safe system results in a unique combination of efficiency and safety. It is possible to work twice as fast with a Top Safe mower without increasing the impact from stones and other obstacles.

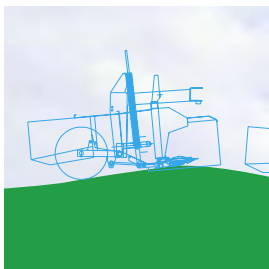
### This is how the Top Safe system works



*If the cutter bar hits a stone, the top spring is automatically compressed and the cutter bar is turned upwards, so that it can move undamaged over the obstacle.*



*If the obstacle is very large an extension link in the drawbar is activated and the cutter bar is lifted even higher so that the obstacle is unlikely to stop the machine.*



### Perfect ground following – increases the yield and the quality

The abilities of the Top Safe system means that it adjusts itself perfectly to the ground contours even at very high working speeds. This ensures a uniform stubble height and quicker re-growth. Contamination of the crop is avoided and the feed quality is secured.

# Trailed disc mowers with conditioner



## GMS 1000 Range

- Hydraulic conversion to transport position.
- The cutter bar is equipped with HD or HDS discs and profile blades. Both with long life.
- The discs can be equipped with flow-intensifiers for continuous cutting in difficult conditions (standard on GMS 3202).
- Top Safe Anti Crash system - see page 17.
- Available with PE-finger conditioner for normal grass types and with Top Roller conditioner for alfalfa and the like. – see page 11 and 26.
- GMS 3202 has an extra strong design and Top Dry (see page 14) as standard, as well as possibility of double swathing (Collector - see page 21).

Type	GMS 2800	GMS 3202
Working width	2.8 m	3.15 m
Tractor, min. PTO	50 kW/68 HP	75 kW/102 HP
Weight	1600 kg	2020 kg
Number of discs	7	8
Number of blades	14	16
Conditioner type	PE-fingre	PE-fingre

# Trailed disc mowers with conditioner



## GMS Asymmetric

- The system is available for all GMS mentioned on page 18 and all FLEX on page 22.
- On the Flex model hydraulics is unnecessary. The system has no moving parts.
- GMS has hydraulic control so the special swath boards move synchronously with the drawbar.
- The swaths are laid in pairs to be picked up by a relatively narrow pick-up.

Type	GMS 2800	GMS 3202	GMS 3600
Working width	2.8 m	3.2 m	3.6 m
Double swath width	2.6-3.0 m	2.8-3.0 m	3.6-4.0 m

# Trailed disc mowers with conditioner



## GMS Top Dry

- Top Dry reduces the drying time and improves the feed quality – see page 14.
- All GMS can be adjusted to normal narrow swaths without tools.
- All GMS can be equipped with a crop deflector plate. When activating this extension plate the crop is spread in the full width of the conditioner – approx. 85% of the working width.

Type	GMS 2800	GMS 3202	GMS 3600
Conditioner width	2.37 m	2.70 m	3.11 m
Swath width	0.8-2.4 m	0.8-2.7 m	1.5-3.1 m

# Trailed disc mowers with conditioner



## GMS Collector

- The Collector for double swathing can be mounted on all GMS-02 models.
- With the Collector mounted the machine can still lay normal swaths and wide spread.
- The swaths are placed so that they can be gathered with a pick up from 1.8 m.
- The Collector can be retro-fitted.
- The Collector can be mounted on both Top Safe and Flex machines.

### Type

### GMS 3202 Top Safe GMS 3202 Flex

Working width	3.20 m
Tractor, min. PTO	75 kW/102 HP
Swath width, normal swaths	1.1-2.2 m
Swath width, wide spreading	2
Swath width, double swaths	1.4-2.0 m

# Trailed disc mowers with conditioner



## GMS Flex

- With the Top Safe Anti Crash System – see page 17.
- The cutter bar is equipped with HD discs and profile blades. Both with long life.
- The discs are equipped with flow-intensifiers for continuous cutting in difficult conditions.
- There is a swivel gearbox at both ends of the drawbar. This feature eliminates transmission vibration and extends machine life.
- Possibility of double swathing – Collector (only GMS 3202).
- Can work on both right and left side of the tractor. Harvesting the field from one side only (the reversible plough principle) increases the capacity by 15% on average.
- The reversible plough principle makes it possible to make asymmetric double swaths in an economic and effective way – see page 19.
- Available with PE-finger conditioner for normal grass types and with Top Roller conditioner for alfalfa and the like. - see page 11 and 26.

Type	GMS 3202 Flex	GMS 3600 Flex
Working width	3.20 m	3.60 m
Tractor, min. PTO	75 kW/102 HP	75 kW/102 HP
Weight	2400 kg	2620 kg
Number of discs	8	9
Number of blades	16	18
Conditioner type	PE-fingers	PE-fingers

# Trailed disc mowers with conditioner



## GMS 4802

- With the Top Safe Anti Crash System – see page 17.
- The cutter bar is equipped with HD discs and profile blades. Both with long life.
- The discs are equipped with flow-intensifiers for continuous cutting in difficult conditions.
- The machine includes transport chassis, and the transport width is less than 3 m.
- GMS 4802 In Line is equipped with swath guards reducing the swath width to 1.1–1.6 m.
- GMS 4802 In Line can be combined with front mower. Total working width almost 8 m. Two single swaths maximum 1.6 m.
- GMS 4802 Dual Line is equipped with conveyor belt equipment to obtain a swath width of 2.0-2.8 m of a total working width of 9.2 m.
- GMS 4802 Dual Line can be combined with a front mower. Total working width almost 8 m, double swath maximum 3.3 m.

Type	GMS 4802 In Line	GMS 4802 Dual Line
Working width	4.6 m	4.6 m
Tractor, min. PTO	95 kW/130 HP	95 kW/130 HP
Weight	3970 kg	4120 kg
Number of discs	12	12
Number of blades	24	24
Conditioner type	PE-fingers	PE-fingers
Swath equipment	Guards	Belt
Swath width		
Single swath	1.1-1.7 m	1.0-1.3 m
Double swath	-	2.0-2.8 m
Top Dry	2.8 m (standard)	3.6 m (option)

# Mounted triple combination mowers



## GX 9005/GX 9005 SM

- Optimal stubble height is set through the central adjustment.
- Pendulum suspended cutting units ensure exact contour following.
- The low machine weight, which is obtained through the use of high-strength steel, ensures extremely low ground pressure.
- Quick'n Safe discs with twisted blades leaving an excellent stubble.
- Slim Line cutter bar makes a low stubble height possible.
- Top Cover protects the cutter bar.
- A valve (optional equipment) makes it possible to lift the right-hand or the left-hand cutting unit separately so that you can carry out short work mowing without secondary cutting.
- Remote control by means of the tractor hydraulics (a control panel is not necessary).

Type	GX 9005	GX 9005 SM
Working width*)	8.60 m	8.60 m
Tractor, min. PTO	103 kW/140 HP	129 kW/175 HP
Weight	1720 kg	2170 kg
Number of discs	16	16
Number of blades	32	32
Conditioner type	-	PE-fingers
Number of PE-fingers	-	2 x 136
Swath width	2 x 2.60 m	2 x 1.40 - 1.60 m

\*) The working width implies that either GD 3205 F or GD 3205 FM Top Dry is mounted at the front of the tractor.



# Trailed triple combination mowers



## GXT 12005/GX 12005 SM

- Optimal stubble height is set through the central adjustment.
- A valve makes it possible to lift the right-hand or the left-hand cutting unit separately so that you can carry out short work mowing without secondary cutting.
- Pendulum suspended cutting units ensure exact contour following.
- The Top Safe system allows the cutter bar to move upwards and at the same time a pressure relief valve allows the cutting unit to swivel backward if hitting an obstacle.
- Quick'n Safe discs with twisted blades leaving an excellent stubble.
- Slim Line cutter bar makes a low stubble height possible.
- Top Cover protects the cutter bar.

Type	GXT 12005	GXT 12005 SM
Working width*)	11.55 m	11.55 m
Tractor, min. PTO	147 kW/200 HP	184 kW/250 HP
Weight	4920 kg	5400 kg
Number of discs	24	24
Number of blades	48	48
Conditioner type	-	PE-fingers
Number of PE-fingers	-	384
Transport wheel	12,5/80-8	12,5/80-8
Alternative wheels	500/50-17	500/50-17

\*) The working width implies that either GD 3205 F or GD 3205 FM Top Dry is mounted at the front of the tractor.

# Minimum drying period and maximum feed value

Top Roller is JF-STOLL's roller conditioning system designed for JF-STOLL's mower range. Equipped with this latest roller conditioning system the mowers treat alfalfa, clover and grass in a gentle and effective way so that their feed value is maximised.

### Less waste

The advantages of the Top Roller system are obvious. Clover, for example, has to be harvested in a careful way to maintain its structure and high feed value. The gentler action of the Top Roller reduces crop wastage over other conditioning systems by approximately 200 kg dry matter per hectare.

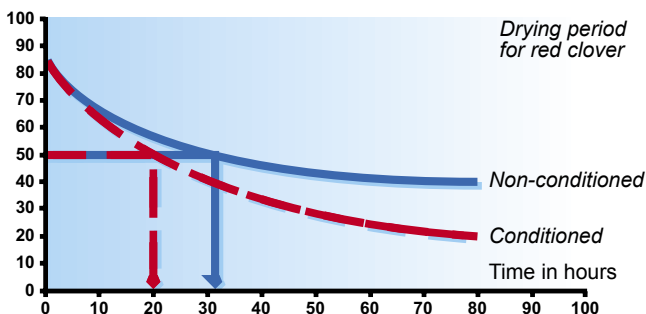
### Greater effect

The Top Roller conditioning system from JF-STOLL consists of 2 strong rollers with high rubber profiles. These two mesh into each other like the teeth in a toothed gear. As the clover is pulled through, its stems are stretched and bruised by the edge of every rubber profile.



*The rollers are synchronised and always remain in mesh. As the stems pass through the rollers they are bruised which allows the crop to dry faster.*

Water content in %



# Disc mowers with conditioner



## GX-SC

- With the advantages 1-4 mentioned on page 15 for GX-SM.
- The roller profiles are divided into small segments. If damage occurs only the defective segment needs replacement.
- The rollers are synchronised with JF-STOLL's patented Auto-Synchro-System. This system ensures that the mesh of the roller profiles is always correct no matter the size of the opening - therefore long life and more perfect conditioning.
- GX-SC is equipped with Easy Lift (see page 10) which ensures:
  - Very easy connection to the tractor.
  - Extremely good ground following and constant low ground pressure on uneven ground.
  - Constant angles on PTO drive shafts when turning on headlands ensure long life.

Type	GX 2402 SC	GX 2802 SC
Working width	2.40 m	2.80 m
Tractor, min. PTO	44 kW/60 HP	54 kW/73 HP
Weight	980 kg	1080 kg
Number of discs	6	7
Number of blades	12	14

# Trailed disc mowers with conditioner



## GCS

- Top Safe - see page 17.
- Same advantages as GMS on page 18.
- Asymmetric swathing is possible – see page 19.
- Top Roller - see page 26.
- The roller profiles are divided into small segments. If damage occurs only the defective segment needs replacement.  
- Therefore low repair costs.
- The rollers are synchronised with JF-STOLL's patented Auto-Synchro-System. This means that the mesh of the rollers is correct no matter the size of the opening. This gives longer life and more effective conditioning.

Type	GCS 2400	GCS 3200	GCS 3200 Flex
Working width	2.4 m	3.2 m	3.2 m
Tractor, min. PTO	35 kW/48 HP	55 kW/75 HP	55 kW/75 HP
Weight	1540 kg	1720 kg	2400 kg
Number of discs	6	8	8
Number of blades	12	16	16

# Rotary tedders



## Z

- Mounted tedders intended for small tractors.
- Large rotor diameter with large overlap – ensures good spreading quality.
- Hydro models with wide angle transmission - ensures long life.
- Asymmetric tines of 9.5 mm provide better function and have long durability.
- Rotor inclination can be adjusted and adapted to all crops.
- The parking stand is positioned on the main frame – this ensures easy connection to the tractor.
- The transport safety device can be operated from the tractor seat.
- Double universal joints means quick folding up on the headland. Operating errors with subsequent machine damage is impossible.

Type	Z 455 H	Z 555 H	Z 665 H
Working width	4.50 m	5.40 m	6.60 m
Transport width	2.65 m	2.89 m	2.95 m
Number of rotors	4	4	6
Rake arms per rotor	6	6	6
Rotor diameter	1.48 m	1.70 m	1.48 m
Tractor, min. PTO	18 kW/ 23 HP	22 kW/30 HP	25 kW/34 HP

# Rotary tedders



## Z-Pro

- Solid 100x160 mm square tube frame construction.
- Asymmetric tines for exact picking-up of the crop.
- Adjustment of rotor inclination without any tools.
- Several tine angle settings.
- Hydraulic change-over to angled position for clearing field boundaries (option).
- Lateral stabilizers are standard.
- Lighting equipment is standard on Z 905.

Type	Z 585 Pro	Z 685 Pro	Z 765 Pro
Working width	5.60 m	6.80 m	7.60 m
Transport width	2.95 m	2.95 m	2.95 m
Number of rotors	4	6	6
Rake arms per rotor	7	6	7
Rotor diameter	1.75 m	1.5 m	1.65 m
Tractor, min. PTO	30 kW/40 HP	50 kW/68 HP	60 kW/82 HP
Weight	674 kg	870 kg	890 kg

Type	Z 905 D Pro	Z 905 A Pro
Suspension	3-point	Trailed
Working width	8.60 m	8.60 m
Transport width	2.99 m	2.99 m
Number of rotors	8	8
Rake arms per rotor	6	6
Rotor diameter	1.5 m	1.5 m
Tractor, min. PTO	70 kW/98 HP	30 kW/40 HP
Weight	1240 kg	1450 kg

# Rotary rakes – side-delivery



## R 1

- Tangential rake arm positioning.
  - Detachable rake arms.
  - Minimum transport width.
  - The wheels are placed in front of the rotor centre for optimal ground following and clean raking.
- Advantages of the R370/420/460**
- Fully sealed enclosed bevel gearbox. With fluid grease filling – greased for life.
  - Fully enclosed cam track – dust-tight.
  - Several rakes are available with chassis with 4 wheels – maximum clean raking.

Type	R 285 DS	R 315 DS	R 335 DS
Working width	2.90 m	3.15 m	3.40 m
Transport width	1.60 m	1.60 m	1.60 m
Rake arms per rotor	8	9	10
Double tines per rake arm	3	3	4
Rotor diameter	2.40 m	2.65 m	2.90 m
Weight	275 kg	340 kg	390 kg

Type	R 370 DS	R 420 DS R 420 AS R 420 Special	R 460 DS
Working width	3.50 m	4.15 m	4.45 m
Transport width	1.60 m	1.60 m	1.90 m
Rake arms per rotor	10	12	12
Double tines per rake arm	4	4	4
Rotor diameter	3.00 m	3.20 m	3.50 m
Weight	390 kg	450 kg	526 kg

# Rotary rakes – centre delivery



## R 2 and Pro

- Tangential rake arm positioning.
- R 655 DS is 3-point suspended.
- R 655 AS/ASL is trailed and suitable for small tractors.
- R 655 ASL is equipped with trailed chassis with automatic steering – excellent manoeuvrability.
- Detachable rake arms and foldable safety frames – little storage space and minimum transport width.
- Large track width and wheels under each rotor providing maximum ground following.
- The PRO-range has 4 wheels under each rotor providing maximum ground following.
- The PRO-range has "big-size" cam track with 3 years' guarantee.

Type	R 655 DS	R 655 ASL
Working width, variable	6.15-6.55 m	6.35-6.55 m
Transport width	3.0 m	3.0 m
Rake arms per rotor	10	10
Double tines per rake arm	4	4
Rotor diameter	2 × 2.90 m	2 × 2.90 m
Weight	857 kg	975 kg

Type	M 800 Pro	M 860 Pro
Working width, variable	7.4-8.0 m	8.00-8.60 m
Transport width	2.82 m	2.82 m
Rake arms per rotor	13	13
Double tines per rake arm	4	4
Rotor diameter	2 × 3.50 m	2 × 3.80 m
Weight	2080 kg	2160 kg



# Rotary rakes – side delivery



## R 2

- 12 rake arms with tangential positioning per rotor – super working quality.
- Detachable rake arms – small transport width.
- Large swath is possible – also in 3<sup>rd</sup> and 4<sup>th</sup> cut.
- Lateral rotor inclination is individually adjustable for each rotor.
- Hydraulic adjustment of the working width.
- High lift of rake tines – optimal when driving crosswise on the headland.
- Stable gear with hardened gearing.
- Function for 2 single swaths.
- Tandem Twin wheels for steady operation on uneven ground (option) and extra support wheel for drawbar (option).

Type	R 1405 S	R 1405 SB
Working width, variable	3.60-6.40 m	3.60-6.40 m
Transport width without rake arms	1.60 m	1.60 m
Number of rotors	2	2
Rake arms per rotor	12	12*
Double tines per rake arm	4	4
Rotor diameter	3.00 m	3.00 m
Tyres	18/8.5-8	18/8.5-8
Weight	1220 kg	1375 kg

Type	R 1605	S 1810 Pro
Working width, variable	6.3 m	7.90 m
Transport width without rake arms	3 m	2.82 m
Number of rotors	2	2
Rake arms per rotor	13	13
Double tines per rake arm	4	4
Rotor diameter	3.20 m	3.80 m
Tyres	18/8.5-8	18/8.5-8
Weight	1850 kg	2220 kg

## Upper Cut

# This is why JF-STOLL is No. 1



The JF-STOLL chopping rotor has two different characteristics, which both have been very ground-breaking within the area of precision choppers. It is the Upper Cut and the Multi-knife systems. The Upper Cut system cuts the material at the shearbar, and then throws it directly into the chute and out. It does not have to go through the rotor housing first. Therefore, the friction between the knives and rotor housing is avoided and the risk of damage made by foreign objects such as stones or steel etc. is reduced. The Multi-knife system helps to keep repair costs to a minimum. If the wide knife is damaged in the centre of a full width knife rotor, as fitted to most other cylinder type foragers, replacement is usually very expensive because the knife covers the whole width of the rotor. On JF FCT 1350, however, the knife is divided into 5 sections so it is possible to change only one small knife section.



*The JF-STOLL knife is manufactured so that it protects the chopping rotor from secondary damage. The knife has a built-in line of fracture where it will break if a large object enters into the machine. The loose part will immediately be thrown into the chute and will not cause any further damage. The shearbars are tungsten-coated and can be reversed for double usage.*



*The Upper Cut rotor ensures low energy consumption. The energy consumption can be reduced by 25-50%.*

# Forage harvesters



## FC/FCT

- Wide cutting rotor gives the machine a very high capacity.
- The upward cutting rotor (Upper Cut) reduces the power consumption. High output can be obtained with middle-sized tractors (see page 34).
- With sectioned blades. Damaged blades are quickly replaced at low costs.
- The machine can be equipped with a direct cutting unit for grass, whole crop, etc. and with a maize unit (not FC 850).

Type	FC 850	FCT 900
Type of drawbar	Side mounted	Trailed
Tractor, min. PTO	40 kW/54 HP	50 kW/68 HP
Capacity*)	55 ton/h	60 ton/h
Pick up width	1.6 m	1.8 m
Cutting rotor width	0.72 m	0.72 m
Number of blades	24	24
Theoretical cutting	15-30 mm	7-30 mm

\*) Depending on dry matter and tractor size.

# Forage harvesters



## FCT 1050 ProTec

- Same advantages as mentioned on page 35.
- ProTec protects the machine. If for instance a large stone, tree root or other foreign object gets into the machine the torque will suddenly increase and the feed intake will stop.
- FCT 1050 is available with metal detector.
- The opening of the feed intake is exceptionally high and large capacities can be achieved.

### Type

### FCT 1050 ProTec

Tractor, min. PTO	70 kW/95 HP
Capacity <sup>*)</sup>	100 ton/h
Pick-up width	2.1 m
Cutter bar	2.4 m
Maize unit	2 rows
Cutting rotor width	0.72 m
Theoretical cutting	8-32 mm

<sup>\*)</sup> Depending on dry matter and tractor size.

# Forage harvesters



## FCT 1350

- The ultimate precision chopper for grass.
- Wide pick-up makes it possible to collect double swaths.
- The swivel chute is activated hydraulically and the system has proved to be very reliable.
- High positioned drawbar results in a smaller transport width.
- A real "King Size" machine with the capacity to compete with middle-sized self-propelled precision choppers within 150- 250 HP category.

### Type

Type	FCT 1350
Tractor, min. PTO	90 kW/122 HP
Capacity*)	100 ton/h
Pick up width	3.1 m
Chopping length	7-15-30 mm
PTO-type, standard	1 $\frac{3}{4}$ " - 20 splines
Wheel dimension	19×17/10
Transport width	3.50 m
Weight	2760 kg
3-row maize unit	Option

\*) Depending on dry matter and tractor size.

# Precision chop forage wagons



## ES

- Has Upper Cut – see page 34.
- Great volume gives high capacity. Normally 2 loads per hour corresponding to 1.5 hectare/h.
- The capacity can be increased by using a parallel-driving trailer (only ES ProTec).
- A one-man system. Therefore no waste of time.
- No waste of crop – even when a strong side wind is blowing.
- Is suitable for straw. The specific weight of the chopped straw is equal to the actual specific weight (incl. hollow space) of a stack of round bales.
- The chopping section is bolted on to the trailer unit and can therefore be replaced.

Type	ES 3000	ES 3600 ProTec
Tractor, min. PTO	70 kW/95 HP	90 kW/122 HP
Volume, DIN-Norm	30 m <sup>3</sup>	36 m <sup>3</sup>
Loading capacity	10 ton	12 ton
Pick up width	1.8 m	1.8 m
Cutting rotor width	0.72 m	0.72 m
Number of blades	24	32

Type	ES 4200 ProTec	ES 4800 ProTec
Tractor, min. PTO	110 kW/150 HP	125 kW/170 HP
Volume, DIN-Norm	42 m <sup>3</sup>	48 m <sup>3</sup>
Loading capacity	15 ton	18 ton
Pick up width	1.8 m	1.8 m
Cutting rotor width	0.72 m	0.72 m
Number of blades	32	32

# Flail forage harvester



## FH

- The heavy flails on flat rotor shafts always produce clean stubbles.
- The machine is universal. In addition to harvesting grass it is able to harvest beet tops, potato tops, chop straw etc.
- The system with adjustable shearbar and counter flaps enables it to pick up wilted swaths (2-step harvesting).
- It is easy to check the flails as the chute can be opened with a small lever.
- The machine is quickly and easily connected to the tractor. All work can be done from the comfort of the tractor seat.
- Good contour following and easy control of the stubble height with the optional front wheel, extra soft ground wheels and hydraulic stubble height pre-selector.

Type	FH 1300	FH 1450
Working width	1.30 m	1.45 m
Tractor, min. PTO	37 kW/50 HP	45 kW/60 HP
Weight	600 kg	650 kg
Number of flails	18	18
Flail width	90 mm	90 mm

## Especially for ruminants

The JF-STOLL Feeder is a complete diet mixer, specially aimed to meet the efficiency requirements in modern dairy and beef farming. The Feeder is based on TMR (Total Mixed Ration), which is the perfect feeding principle for ruminants.

### Something to chew on

If a cow produces only 30 kg milk a day, it still requires approximately 4 times as much energy as a dry cow. To provide this energy, a large quantity of feed must be digested, increa-

sing the risk of digestive sickness. This, in turn, places high demands on the quality and structure of the feed.

### TMR - briefly

JF-STOLL's Feeder has been designed especially to fulfil these needs, in that the mixing process is carried out in a very gentle manner. TMR is characterised by the preferred mixture of roughage and concentrates, with which the ruminants are most comfortable.



*A small Jersey cow yields 9000 kg 4% EMC/year on only one TMR feeding per 24 hours with the JF-STOLL Feeder.*

## Feeder overview

		VM							PA
Size	Number of dairy cows/ per load (8000 kg ECM cow/year)	1 auger			2 augers		3 augers		Paddles
		Doors		Cross conveyor		Doors		Door	
		Compact	Normal	Normal	Compact	Compact	Normal	Normal	
		VM-1 S	VM-1	VM-1 B	VM-2 SB	VM-2 S	VM-2	VM-3	PA
6,5 m <sup>3</sup>	35-42	VM 6.5-1 S							
8 m <sup>3</sup>	45-55	VM 8-1 S							
10 m <sup>3</sup>	55-65	VM 10-1 S	VM 10-1	VM 10-1 B					
12 m <sup>3</sup>	70-85		VM 12-1	VM 12-1 B					PA 12 R
14 m <sup>3</sup>	80-95		VM 14-1	VM 14-1 B	VM 14-2 SB	VM 14-2 S			PA 15 R
16 m <sup>3</sup>	90-115				VM 16-2 SB	VM 16-2 S			
18 m <sup>3</sup>	100-130				VM 18-2 SB	VM 18-2 S			
19 m <sup>3</sup>	100-130								PA 19 R
22 m <sup>3</sup>	120-160						VM 22-2		
27 m <sup>3</sup>	150-185						VM 27-2		
30 m <sup>3</sup>	170-220						VM 30-2		
32 m <sup>3</sup>	180-230							VM 32-3	
38 m <sup>3</sup>	220-275							VM 38-3	
45 m <sup>3</sup>	260-330							VM 45-3	
Optional equipment									
Elevator, 75 cm	A	A	-	-	A	A	A	A	-
Elevator, 220 cm	-	B	B	-	A + B	A + B	A + B	A + B	A
Elevator, 90/160 cm, for belt	-	-	A	A	-	-	-	-	-
Elevator, 100 cm	-	-	-	-	-	-	-	-	A
Corner doors	-	-	-	B	B	-	-	-	-
Narrow cross conveyor	-	B	-	-	B	B	B	B	-

A = Mounted at the side

B = Mounted at the rear





## ProFeed optimises the operation

JF-STOLL's remote-controlled computer system ProFeed handles up to 10 different feed plans each being able to contain up to 20 types of feed. If the number of cows you mix for has changed, a new number is put into the computer system and the computer system then calculates a new feed plan.

### A practical tool

Stored data can be shown on the ProFeed display. For

instance you can see how much grass silage has been used in a certain period of time and thereby ascertain how much feed was made from one field or how much the silo contained. With this data the economy of the field can be calculated. Another example: Read how much feed has been used and then calculate the efficiency of the milk production (MJ per kg ECM). It is also possible to transfer data to another computer for data processing. With the ProFeed system data is available for the production management and there is a possibility of optimising the financial circumstances of the milk production.



# Complete diet mixers



## Feeder PA

- Sturdy design and construction for a very long life. For instance, the mixing tub is made of micro alloy steel.
- The paddle principle preserves the feed structure.
- The power consumption is very low and only a small tractor is required.
- Exact and solid weighing equipment with clear display. 57 mm large numbers.
- Requires only one hydraulic service.
- Can be connected to ProFeed (see page 41).
- Is equipped with an extremely strong transmission and chains running in oil bath.
- Exact Coupe (standard equipment) is a cutting knife set that makes it possible to use feed which is rich in structure.
- Can be equipped with JF-Link (wireless electric operation). Makes it possible to adjust the mixing tub from the loading tractor.

Type	PA 12	PA 15	PA 19
Volume, level load	12 m <sup>3</sup>	15 m <sup>3</sup>	19 m <sup>3</sup>
Effective load	5000 kg	6300 kg	8000 kg
Height	2.71 m	2.77 m <sup>*)</sup>	2.95 m
Discharge height			
Transport roller (R)	0.89 m	0.99 m	0.97 m
Elevator, long (E22)	2.23 m	2.29 m	2.27 m
Elevator, short (E10)	1.23 m	1.29 m	1.27 m
Tractor, min. PTO	45 kW/60 HP	60 kW/80 HP	80 kW/110 HP
Weighing equipment	Standard	Standard	Standard
1 load of feed covers the daily need (8000 kg ECM/cow/year) of:			
50-60 dairy cows		60-90 dairy cows	90-120 dairy cows

<sup>\*)</sup> 2.71 with alternative wheels.

# Complete diet mixers



## Feeder VM

- The vertical auger with mounted blades shreds all types of bales and mixes these bales with all kinds of feed types.
- The strong conical roller bearings of the mixing auger are hermetically sealed and run in oil bath.
- Comfortable ladder with large platform. Can be placed at two places on the wagon.
- The chopping degree can be varied with the shearbar.
- Modular construction makes it possible later on to change the unloading from left to right and from 1 to 3 doors.
- Exact and solid weighing equipment with clear display. 57 mm large numbers.
- Can be connected to ProFeed (see page 41).

Type	VM 6.5-1 S	VM 8-1 S	VM 10-1 S
Volume, level load	6.5 m <sup>3</sup>	8 m <sup>3</sup>	10 m <sup>3</sup>
Effective load	2600 kg	3200 kg	4000 kg
Vertical augers	1	1	1
Height*)	2.32 m	2.49 m	2.82 m
Discharge height*)			
Door (bottom plate)	0.77 m	0.77 m	0.77 m
Elevator, short	0.77-0,95 m	0.77-0,95 m	0.77-0,95 m
Width (transport)			
Door, 1 side	2.29 m	2.29 m	2.29 m
Doors, 2 sides	2.36 m	2.36 m	2.36 m
Elevator (E08)	2.50 m	2.50 m	2.50 m
Tractor, min. PTO	35 kW/48 HP	40 kW/54 HP	45 kW/61 HP
Weighing equipment	Standard	Standard	Standard
1 load of feed covers the daily need (8000 kg ECM/cow/year) of:			
dairy cows	35-42	45-55	55-65
dairy cows			
dairy cows			

\*) Wheels 30/11.5 – 14.5

# Complete diet mixers



## Feeder VM

- The vertical auger with mounted blades shreds all types of bales and mixes these bales with all kinds of feed types.
- The strong conical roller bearings of the mixing auger are hermetically sealed and run in oil bath.
- The chopping degree can be varied with the shearbar.
- Unloading can be adjusted to all kinds of stall arrangements/needs.
- Modular construction makes it possible later on to change the unloading from left to right and from 1 to 3 doors.
- Exact and solid weighing equipment with clear display. 57 mm large numbers.
- Can be connected to ProFeed (see page 41).

Type	VM 10-1	VM 12-1	VM 14-1
Volume, level load	10 m <sup>3</sup>	12 m <sup>3</sup>	14 m <sup>3</sup>
Effective load	4000 kg	4800 kg	5600 kg
Vertical augers	1	1	1
Height*)	2.58 m	2.85 m	3.15 m
Discharge height**)			
Door (bottom plate)	0.74 m	0.74 m	0.74 m
Short elevator (E08)	0.72-1.1 m	0.72-1.1 m	0.72-1.1 m
Elevator, long (E22)	1.6-2.1 m	1.6-2.1 m	1.6-2.1 m
Tractor, min. PTO	50 kW/68 HP	55 kW/75 HP	60 kW/82 HP
Weighing equipment	Standard	Standard	Standard
1 load of feed covers the daily need (8000 kg ECM/cow/year) of:	55-65 dairy cows	70-85 dairy cows	80-95 dairy cows

\*) Twin wheels H29x9.0-15

# Complete diet mixers



## Feeder VM

- The vertical augers with mounted blades shred all types of bales and mix these bales with all kinds of feed types.
- The strong conical roller bearings of the mixing auger are hermetically sealed and run in oil bath.
- The chopping degree can be varied with the shearbar.
- Comfortable ladder with large platform. Can be placed at two places on the wagon.
- It is possible to mount a spring-loaded bogie.
- Modular construction makes it possible later on to change the unloading from left to right and from 1 to 5 doors. Is also available with 2 rear corner doors.
- Exact and solid weighing equipment with clear display. 57 mm large numbers.
- Can be connected to Pro-Feed (see page 41).

Type	VM 14-2 S	VM 16-2 S	VM 18-2 S
Volume, level load	14 m <sup>3</sup>	16 m <sup>3</sup>	18 m <sup>3</sup>
Effective load	5600 kg	6400 kg	7200 kg
Vertical augers	2	2	2
Height*)	2.50 m	2.68 m	2.85 m
Discharge height*)			
Door	0.80 m	0.80 m	0.80 m
Short elevator (BE08)	1.06 m	1.06 m	1.06 m
Width			
Door, 1 side	2.29 m	2.29 m	2.29 m
Doors, 2 sides	2.36 m	2.36 m	2.36 m
Elevator (E08)	2.50 m	2.50 m	2.50 m
Tractor, min. PTO	60 kW/82 HP	65 kW/88 HP	70 kW/95 HP
Weighing equipment	Standard	Standard	Standard
1 load of feed covers the daily need (8000 kg ECM/cow/year) of:	80-95 dairy cows	90-115 dairy cows	100-130 dairy cows

\*) Twin wheels H29x9.0-15

# Complete diet mixers



## Feeder VM with cross conveyor

- The vertical auger with mounted blades shreds all types of bales and mixes these bales with all kinds of feed types.
- The wide door opening ensures optimal conditions for discharge of very dry material.
- The chopping degree can be varied with the shearbar.
- Comfortable ladder with large platform.
- The strong conical roller bearings of the mixing auger are hermetically sealed and run in oil bath.
- Exact and solid weighing equipment with clear display. 57 mm large numbers.
- Prepared for mounting of door to the rear and elevator.
- Can be connected to ProFeed (see page 41).

Type	VM 10-1 B	VM 12-1 B	VM 14-1 B
Volume, level load	10 m <sup>3</sup>	12 m <sup>3</sup>	14 m <sup>3</sup>
Effective load	4000 kg	4800 kg	5600 kg
Vertical augers	1	1	1
Height*)	2.57 m	2.84 m	3.14 m
Discharge height*)			
Door (bottom plate)	0.70 m	0.70 m	0.70 m
Short elevator (BE 09)	0.96 m	0.96 m	0.96 m
Elevator, long (BE16)	1.37 m	1.37 m	1.37 m
Tractor, min. PTO	50 kW/68 HP	55 kW/75 HP	60 kW/82 HP
Vejeudstyr	Standard	Standard	Standard
1 load of feed covers the daily need (8000 kg ECM/cow/year) of:			
dairy cows	55-65	70-85	80-95
dairy cows		dairy cows	dairy cows

\*) Twin wheels H29x9.0-15

# Complete diet mixers



## Feeder VM with cross conveyor

- The vertical augers with mounted blades shred all types of bales and mix these bales with all kinds of feed types.
- The wide door opening ensures optimal conditions for discharge of very dry material.
- The strong conical roller bearings of the mixing auger are hermetically sealed and run in oil bath.
- The chopping degree can be varied with the shearbar.
- Comfortable ladder with large platform.
- It is possible to mount a spring-loaded bogie.
- Exact and solid weighing equipment with clear display. 57 mm large numbers.
- Prepared for mounting of corner doors to the rear.
- Can be connected to ProFeed (see page 41).

Type	VM 14-2 SB	VM 16-2 SB	VM 18-2 SB
Volume, level load	14 m <sup>3</sup>	16 m <sup>3</sup>	18 m <sup>3</sup>
Effective load	5600 kg	6400 kg	7200 kg
Vertical augers	2	2	2
Height*)	2.50 m	2.68 m	2.85 m
Discharge height*)			
Cross conveyor	0.73 m	0.73 m	0.73 m
Short elevator (BE 09)	1.00 m	1.00 m	1.00 m
Long elevator (BE 16)	1.43 m	1.43 m	1.43 m
Tractor, min. PTO	60 kW/82 HP	65 kW/88 HP	70 kW/95 HP
Weighing equipment	Standard	Standard	Standard
1 load of feed covers the daily need	80-95	90-115	100-130
(8000 kg ECM/cow/year) of: dairy cows	dairy cows	dairy cows	dairy cows

\*) Twin wheels H29x9.0-15

# Complete diet mixers



## Feeder VM

- The strong conical roller bearings of the mixing augers are hermetically sealed and run in oil bath.
- The chopping degree can be varied with the shearbar.
- Unloading can be adjusted to all kinds of stall arrangements/needs.
- Exact and solid weighing equipment with clear display. 57 mm large numbers.
- Can be connected to ProFeed (see page 41).
- It is possible to mount a turnable bogie.
- Modular construction makes it possible later on to change the unloading from left to right and from 1 to 5 doors.

Type	VM 22-2	VM 27-2	VM 30-2
Volume, level load	22 m <sup>3</sup>	27 m <sup>3</sup>	30 m <sup>3</sup>
Effective load	8800 kg	10800 kg	12000 kg
Vertical augers	2	2	2
Height*)	2.96 m	3.41 m	3.60 m**)
Discharge height*)			
Door (bottom plate)	0.95 m	1.02 m	1.02 m
Short elevator (E08)	0.92-1.30 m	1.00-1.40 m	1.00-1.40 m
Elevator, short (E22)	1.70-2.20 m	1.80-2.30 m	1.80-2.30 m
Tractor, min. PTO	85 kW/115 HP	95 kW/130 HP	100 kW/136 HP
Weighing equipment	Standard	Standard	Standard
1 load of feed covers the daily need			
(8000 kg ECM/cow/year) of: dairy cows	120-160	150-185	170-220
		dairy cows	dairy cows

\*) Wheels 435/50R19.5.

\*\*) Loading height rear = 3.35 m.



# Complete diet mixers



## Feeder VM

- VM 38 and 45 are as standard equipped with JF Link Macro - a wireless radio-controlled electric control that can be programmed.
- The strong conical roller bearings of the mixing augers are hermetically sealed and run in oil bath.
- The chopping degree can be varied with the shearbar.
- Can be connected to ProFeed (see page 41).
- Unloading can be adjusted to all kinds of stall arrangements/needs.
- Exact and solid weighing equipment with clear display. 57 mm large numbers.
- Modular construction makes it possible later on to change the unloading from left to right and from 1 to 5 doors.
- VM 38 and 45 are as standard equipped with spring-loaded bogie on 3 shafts, of which 2 can be turned.

Type	VM 32-3	VM 38-3	VM 45-3
Volume, level load	32 m <sup>3</sup>	38 m <sup>3</sup>	45 m <sup>3</sup>
Effective load	12800 kg	15200 kg	18000 kg
Vertical augers	3	3	3
Height*)	3.05 m	3.40 m	3.60 m**)
Discharge height*)			
Door (bottom plate)	1.05 m	1.05 m	1.05 m
Short elevator (E08)	1.20 m	1.20 m	1.05-1.45 m
Elevator, long (E22)	1.90-2.35 m	1.90-2.35 m	1.90-2.35 m
Tractor, min. PTO	100 kW/136 HP	110 kW/150 HP	120 kW/162 HP
Weighing equipment	Standard	Standard	Standard
1 load of feed covers the daily need (8000 kg ECM/cow/year) of:			
dairy cows	180-230	220-275	260-330
dairy cows		dairy cows	dairy cows

\*) Wheels 445/45-19.5.

\*\*) Loading height rear = 3.35 m.

# Manure spreaders



## MTS

- The beaterbars are designed to manage the most compact deep bedding.
- Large wheels ensure low roller resistance.
- Strong wheel shafts, brakes and rims can be approved to 40 km/h on public roads.
- Extra strong drive line with 1 $\frac{3}{4}$ " (45 mm) drive shafts. Cast gearbox for the rollers dimensioned for a continuous load of 150 HP.
- Grease spots are easily accessible. Conveyor chain shafts, gear wheels and upper bearings for beaterbars are greased from the side of the wagon.
- Spring-loaded drawbar removes the impact load during loading and guarantees excellent driving comfort.
- Extension sides (+35 cm) increase the capacity (optional equipment).

Type	MTS 12000	MTS 12000 Macro
Net weight	4.3 ton	4.3 ton
Total weight	12 ton	12 ton
Loading height	2.17 m	2.17 m
Vertical gap of the beaterbar	1.60 m	1.60 m
Tractor, min. PTO	90 kW/120 HP	90 kW/120 HP
Spring-loaded drawbar	Yes	Yes
Electronic adjustment of conveyor chain speed	Yes	Yes
Hydraulic tightening of chain	No	Yes
Hydraulic folding-in of lights	No	Yes
Link Macro operation	No	Yes
Hydraulic rear door	Yes	Yes

# Manure spreaders



## JF-STOLL Link Macro

- Chain tightening
  - Automatic when reversing
  - Manually from tractor
  - Chain slackening from tractor (when chain link is removed).
- Folding in of lights on the wagon
  - Always clean lights
  - Happens as the first thing before beater bars and conveyor chain are activated.
- Electronic adjustment of conveyor chain speed.
  - Maximum-speed function for fast spreader start and fast emptying.
  - Conveyor chain speed is shown on display.
- Joint steering box for all functions.
  - All functions are controlled from the same steering box.
  - Minimum of hydraulic hoses between trailer and tractor (1 double acting).
- Wireless communication.
  - No vulnerable signal wire between trailer and tractor.
- Electronic feedback.
  - Green lamp indicates which functions are active.
- Macro programming of all hydraulic functions.
  - Programmed macros/procedures are carried out after one push on the control box, one at start (P1) and another in the end (P2).
  - Optional functions: Speed up/down of conveyor chain, folding lights in/out, door up/down, tightening of chain, start/stop of conveyor chain.
- The system can without problems be moved to other tractors (follows the trailer), which means that also older tractor models can be used with the newest technology.
- JF-STOLL Link Macro is also offered as option to the Feeder program.



## Specialist in grassland machinery and complete diet mixers

When it comes to green feed techniques, JF-STOLL has gained a reputation as one of the world's leading suppliers and specialists. As a specialist manufacturer for over 50 years, we have gained a vast amount of experience from right around the world and, more importantly, unique regional requirements.

No matter which JF-STOLL machine you choose, you can be sure to obtain a top result – in the shape of high performance and operational reliability, minimum maintenance, flexible working possibilities and optimal operating economy.

Dealer

*Some photos may show products with additional equipment. See price list for current standard and additional equipment. We reserve the right to change the construction and specification details without notice.*

*Printer's errors excepted.*

# **JF-STOLL**

JF-Fabriken · J. Freudendahl A/S  
Linde Allé 7 · Postbox 180  
DK-6400 Sønderborg · Denmark  
Tlf. +45 74 12 52 52  
Fax +45 74 42 58 08  
[www.jf-stoll.com](http://www.jf-stoll.com)

PBGB-400X · 11.06 · Printed in Denmark