



MX U6
MX U8
MX U10
MX U12

UTILITY LOADERS

AGRICULTURE

Practicality,
to meet you daily handling
requirements

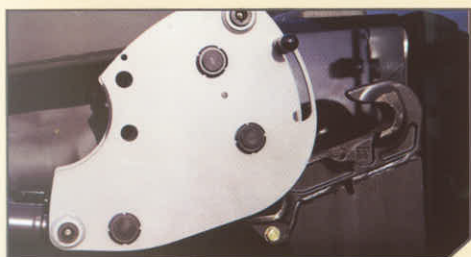
MX

Quick and effective to use
with maximum ease

MX SYSTEM

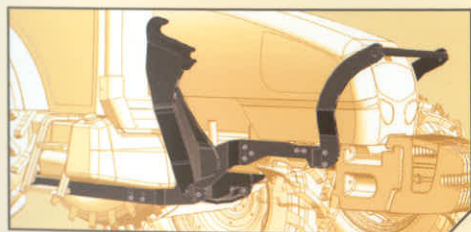


Instant hitching and removal



Easy hitching in all situations

Two guide ramps of the bracket headstock compensate for any misalignment and guarantee easy loader hitching in all situations.



The loader sub-frame bracket distributes stress from the front through to the rear of the tractor, thus reducing stress concentration on the tractor's clutch area.



Extra safety

Pre-locking zone to ensure safe hitching in all situations. The locking status of the loader is confirmed by an indicator visible from the tractor cab.



Hitching and removal of the loader, with only one exit from the cab.



Unlocking



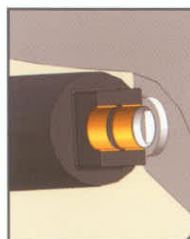
Storage of parking stands

Hitching of the loader is fully automatic. Disconnecting is via an easy to operate handle, located in an extremely accessible position at the outside of the loader side beam. Then simply connect all hydraulic and electric lines via the MACH System and store the parking stands.



Loader jib design

Outer and inner overlap to produce a high strength structure with limited welds resulting in perfect stress distribution.



Reinforced pivot points

Heavy duty pivot pins located in anti-wear bushes. 100% replaceable.



High quality surface finish

MX loaders initially go through an intensive shot blasting process which allows perfect adherence of the primer paint. Next a polyurethane top coat is applied and oven baked to give a highly resistant surface finish.



Level indicator

This indicator, which is visible and easy to set, informs the driver of the angle of the implement relative to the ground.





Performance and comfort with maximum safety

Well positioned hydraulic relief valve



The hydraulic relief valve protects the loader and tractor from accidental shocks. It is concealed under the loaders' cross-member for optimum visibility when hitching implements.

Automatic Implement Hitching



To hitch an implement, simply drive in, then crowd back the loader to its maximum. The implement is automatically locked from the driver's seat.

MX or Euro Implement Carrier

When purchasing your loader choose from either MX type or Euro type implement carrier.



MX implement carrier



EURO implement carrier

Optimum Crowd Angles

With the U// loader buckets can be easily filled due to its impressive 47° crowd angle, furthermore at a lift height of 1.2m the bucket can be crowded back by a further 24°.

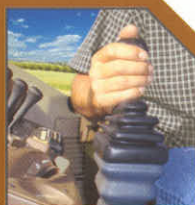


Select the specification to match your needs

Ecopilot & Propilot System

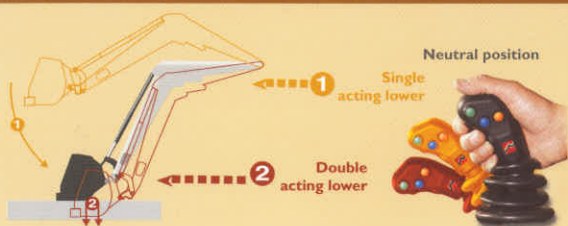
Single and double effect

Patented by MX the concept of single and double acting lift action allows optimum use of the tractor hydraulics depending on the type of work being done. Control becomes instinctive; the driver can feel a direct relationship between the force exerted on the loader's control lever in relation to desired ground pressure of the loader; the harder the lever is pushed, the harder the loader pushes down on the ground.



- When lowering the loader in single acting, the tractor oil flow is then fully available to crowd the implement back, no time is lost.

- Whilst working in the single acting zone no ground pressure is exerted on the loader implements, resulting in reduced wear.



3rd function

For powered implements

The hydraulic connection for the 3rd service is located on the implement carrier, easily accessible and less prone to damage.



OPTION

MX SYSTEM

ECOPILOT® Cable control

[PATENTED]



The valve is actuated by mechanical cables connected to a multifunction lever



PROPILOT® Cable control + Instant hitching

[PATENTED]



The same valve is equipped with an instant hitching system of hydraulics and electrics



SHOCK Eliminator® SYSTEM

Shock absorber



Reduces shocks and bounce caused when driving the tractor. The result is more comfort for the operator.



Without Shock Eliminator®



With Shock Eliminator®

Mach2®

Hydraulic Connection

Strong reliable and very easy-to-use, the MACH 2 enables all couplings to be connected simultaneously in one simple action, even under pressure.

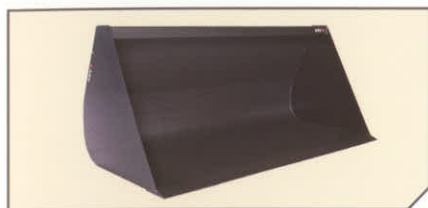


OPTIONS

CONTROL 1

CONTROL 2

Purpose built UTILITY Implements



Utility Bucket

Wear plate, 150x16 mm

	Weight (kg)	Width (mm)	Capacity (liter)	Height (mm)
BRU 150	175	1500	470	625
BRU 180	196	1800	565	750
BRU 200	208	2000	630	840



Utility Manure Fork

Forged tines Ø 35x860 mm

	Weight (kg)	Width (mm)	Nb of tines	Height (mm)	Depth (mm)
BFU 120	100	1200	6	740	1015
BFU 140	115	1400	7	740	1015
BFU 160	130	1600	8	740	1015
BFU 180	145	1800	9	740	1015



Utility Grab

Forged tines Ø 35x860 mm ;
Ø 28 mm for grab

	Weight (kg)	Width (mm)	Nb of tines fork	Nb of tines grab	Height (mm)	Depth (mm)	Capacity (liters)
CGU 120	170	1200	6	6	850	1015	515
CGU 140	195	1400	7	7	850	1015	600
CGU 160	215	1600	8	8	850	1015	685
CGU 180	240	1800	9	9	850	1015	765
CGU 200	265	2000	10	10	850	1015	850

Requires a 3rd function



BR 15

Forged tines Ø 35x1200 mm, 850 mm
between centres (MX hitch only)



Pallet Forks

Height 780 mm

	Weight (kg)	Width (mm)	Dimension of forks (mm)
TR 1 500 kg	170	1320	1050 x 100 x 32
TR 2 500 kg	195	1320	1200 x 100 x 40



Manubal 200

Fixed left arm

Mobile right hand with three adjustable position

3rd function required

Power equivalent or more than U6

PERFORMANCES DATA

	U6	U8	U10	U12
Maximum height at implement pivot*	3,75 m	3,85 m	4,00 m	4,15 m
Maximum height under horizontal bucket ①	3,50 m	3,60 m	3,75 m	3,90 m
Maximum height under dumped bucket ②#	2,95 m	3,05 m	3,20 m	3,35 m
Digging depth ③	0,20 m	0,20 m	0,20 m	0,20 m
Dumping angle at full height ④#	52°	55°	55°	55°
Dumping angle at ground level ④#	47°	47°	47°	47°
Lift force at implement pivot*	1900 kg	2100 kg	2400 kg	2400 kg
Lift capacity at implement pivot over the entire lifting range*	1500 kg	1900 kg	2200 kg	2200 kg
Lift capacity on pallet 0.60m out on forks:				
- at ground level*	Without // 1370 kg With // -	1750 kg 1650 kg	1600 kg 1780 kg	- 1825 kg
- at 2m from ground	Without // 1200 kg With // -	1650 kg 1650 kg	1550 kg 1780 kg	- 1825 kg
- at 3m from ground	Without // 1080 kg With // -	1550 kg 1650 kg	1525 kg 1780 kg	- 1825 kg
- at full height	Without // 1030 kg With // -	1500 kg 1650 kg	1500 kg 1780 kg	- 1825 kg

Characteristics measured at 190 bars at a flow rate of 60 litres/min
Values may vary according to type of tractor used.

*Value at implement pivot are not to be considered as working data.

#Values given with MX BR loose material bucket.



A wide range of MX attachments is also available

- > Implements (earth bucket, grain bucket, multipurpose bucket, etc.)
- > Feeding buckets
- > MANUBAL bale handler
- > Weights





5/2 GB - MX reserves the right to modify the specification, fittings and prices of the models shown without notice.
This brochure is not a contractual document. Reproduction of this document is prohibited.

www.m-x.eu

19, rue de Rennes

BP 83221

F-35690 Acigné

Tél : +33 (0)2 99 62 52 60

Fax : +33 (0)2 99 62 50 22

email : contact@m-x.eu



MX

©Mailleux company copyright